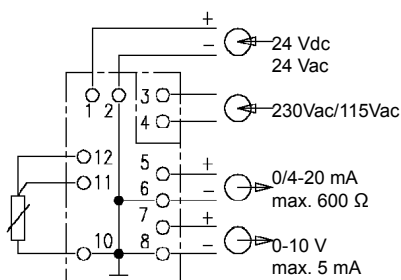




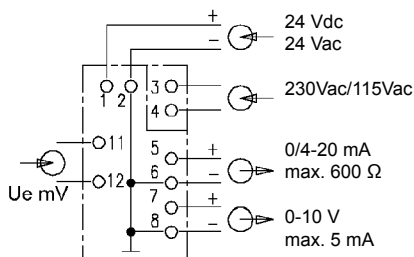
- ❑ Transmitter for connection to a Pt100 element , mV transmitter or potentiometer
- ❑ Measurement and span from the front by trimmer
- ❑ Outputs 0...10 V and 0/4...20 mA
- ❑ Operating temperature 0...50 ° C
- ❑ Supply voltage 230/115 Vac, 24 Vac or 24 Vdc
- ❑ Plastic housing for mounting on 35 mm DIN rail according to EN 50022 (DIN-rail)

For connection to Pt100 - or mV measuring primary elements - or resistance potentiometer. Output signals are both a voltage signal 0...10 V and a current signal 0/4...20 mA. Both output signals are related to their common negative pole.

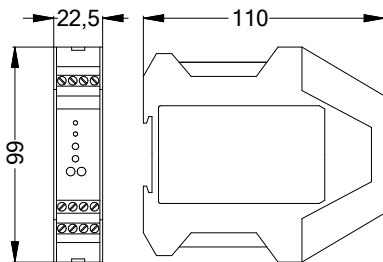
Connections WT225



Connections VT225



Dimensions (mm) serie 225



Specifications

Input:	Pt100 in three-wire circuit, mV or resistance
Measuring range:	lowest 20 °C, highest 400 °C at VT 225 lowest 0...10 mV -50, -30, 0, +30, +50, +100 °C
Start of measuring:	temperature linear, voltage linear
Characteristic:	start of measuring and measuring range to be adjusted at the front via trimmer
Settings:	
Test sockets:	2 mm ø for measuring the output current, internal resistance of the current meter max. 10 Ω
Voltage output:	0...10 V, short-circuit proof, max. 5 mA
Current output:	0/4...20 mA, max. burden 600 Ω
Max. output:	approx. 25 mA with overload or break of probe, display by means of red LED
Supply voltage:	230 Vac/115 Vac via incorporated mains transformer or 24 Vdc or 24 Vac
Power consumption:	approx. 1,5 VA
Case:	polyamid grey, for mounting on 35 mm standard profile DIN-rail as per EN50022 mass 22,5 x 99 x 110 mm (w x h x d)
Connection:	terminal screws up to 2,5 mm ²
Protection class:	IP20 acc to EN60529
Display:	operation green, overload or break of probe red
Ambient temperature:	0...50 °C
Rel. humidity:	0...85 %, no condensation
Weight:	approx. 160 g
EMC:	tested according EN 61000-6-2, EN 61000-6-3, CE mark
Accuracy:	± 0,2 %
Temperature drift:	± 0,2 % / 10 K

Item no.
Transmitter WT225
5117

Input: Thermoresistance element Pt100 in three-wire circuit

Measurement range: Customer-specific presetting required!

Output: 0...10 V and 0/4...20 mA, temperature linear

Supply voltage: 230/115 Vac, 24 Vac or 24 Vdc

Transmitter VT225
5118

 Input: Voltage from 10 mV, **Measurement range: Customer-specific presetting required!**

Output: 0...10 V and 0/4...20 mA, supply voltage: 230/115 Vac, 24 Vac or 24 Vdc

Transmitter WF225
5119

 Input: resistance, **Measurement range: Customer-specific presetting required!**

Output: 0...10 V and 0/4...20 mA, supply voltage: 230/115 Vac, 24 Vac or 24 Vdc