



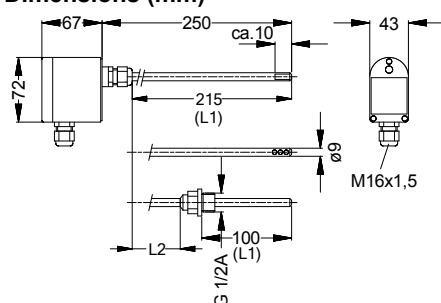
- ❑ Temperature transmitter with Pt100 according DIN EN 60751
- ❑ Analogue outputs 0...10 V or 4...20 mA
- ❑ Plastic case with protection class IP 65
- ❑ Sensor tube from 9 mm stainless steel 1.4571

The MINI90 series is used for temperature measurement in pipes or ducts. Three versions are available: smooth probe tube for use in protective sleeves, perforated pipe probe tip for measurement in air ducts and pipes with G1/2A-screwing sensor for measurements in liquids. In the G1/2A-version the measuring insert can be replaced with the electronic, without demounting the tube. The sensor tube is made of stainless steel 1.4571, the head of ABS plastic.

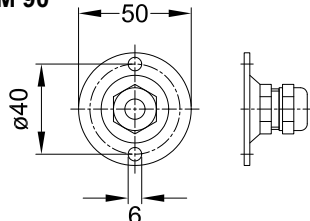
Specifications

Smallest span: 25 °C
 Max. temperature on probe: 400 °C
 Sensor element: Pt100 according DIN EN 60751

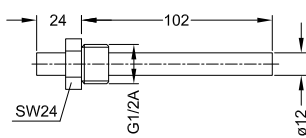
Dimensions (mm)



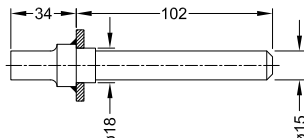
Mounting flange MF-M 90



threaded protection sleeve SHS-M90



weld-in protection sleeve SHE-M 90



2-wire technology

Output: 4...20 mA, linear to temperature
 Supply voltage: 13...30 Vdc, polarity arbitrary

3-wire technology

Output: 0...10 V, linear to temperature
 Supply voltage: 24 Vdc or 24 Vac, ± 25 %

Ambient temperature of: -10...0...+70 °C
 Electronic: plastic ABS, light grey
 Case: protection class IP 65 to EN60529
 Tube: stainless steel, material no. 1.4571
 Time constant: check table pls.
 Weight: approx. 250 g
 Tolerance limit: < 0,25 % ± 0,15 °C
 EMC: tested according EN 61000-6-2, EN 61000-6-3, CE mark

Time constants at different conditions:

	time constant
Medium: Water	sec.
no flow	37
flow 2 m/s	33
with protection sleeve, brass	73
with protection sleeve, brass oil-filled	50
with protection sleeve, steel	85
with protection sleeve, steel oil-filled	45
Medium: Air	
no flow	416
flow 10 m/s	75

Item no.

Duct temperature transmitter MINI90	plan tube	
2-wire technology, output: 4...20 mA	Measurement range: Customer-specific presetting required!	7120
3-wire technology, output: 0...10 V	Measurement range: Customer-specific presetting required!	7125
Duct temperature transmitter MINI90	tube end perforated	
2-wire technology, output: 4...20 mA	Measurement range: Customer-specific presetting required!	7121
3-wire technology, output: 0...10 V	Measurement range: Customer-specific presetting required!	7126
Duct temperature transmitter MINI90	welded screwing G1/2A, mounting length 100 mm	
2-wire technology, output: 4...20 mA	Measurement range: Customer-specific presetting required!	7122
3-wire technology, output: 0...10 V	Measurement range: Customer-specific presetting required!	7127

ACCESSORIES

Mounting flange MF-M 90 for air ducts	71201
Threaded protection sleeve SHS-M 90, brass, brass, brazed	71202
Weld-in protection sleeve SHE-M 90 St37 PN40	71203
Special length L1 / L2	Customer-specific presetting required! 71204